

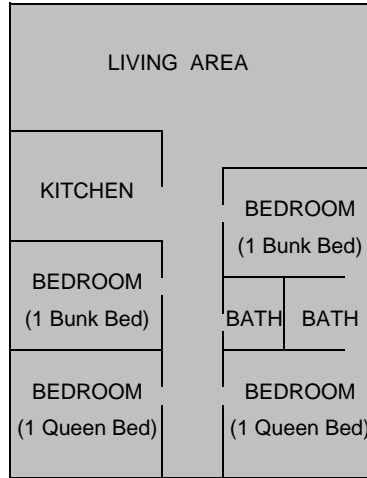


CHALET HOUSING AT TRAIL WEST



Dallas Chalet

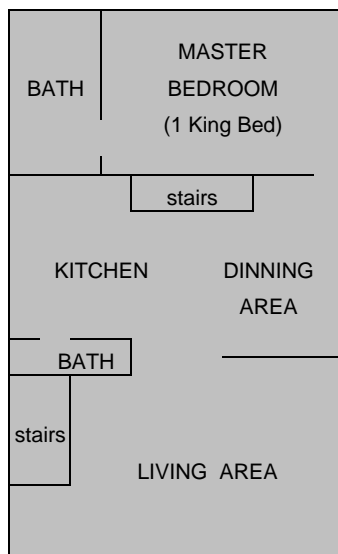
The Dallas Chalet can sleep up to **8** people, or accommodate 2 couples.



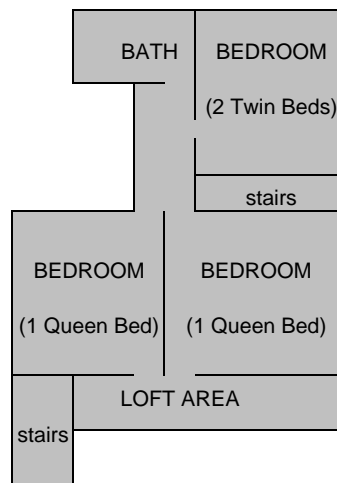
GROUND FLOOR

Shavano Chalet

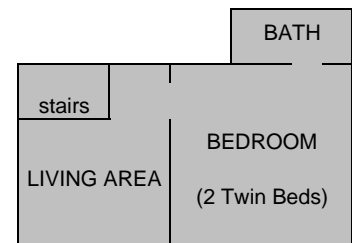
The Shavano Chalet is the largest Chalet. It can sleep up to **10** people, or can accommodate 4 couples. The Ground Floor Living Area also serves as a small group meeting area. The downstairs level can be made into a private living area.



GROUND FLOOR



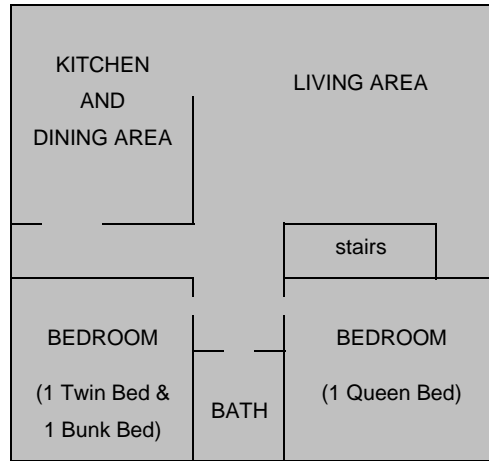
UPSTAIRS



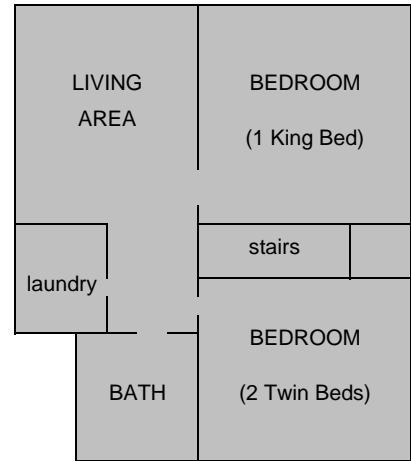
DOWNSTAIRS

Red Deer Chalet

The Red Deer Chalet can sleep up to **8** people, or can accommodate 3 couples. The downstairs level can be made into a private living area.



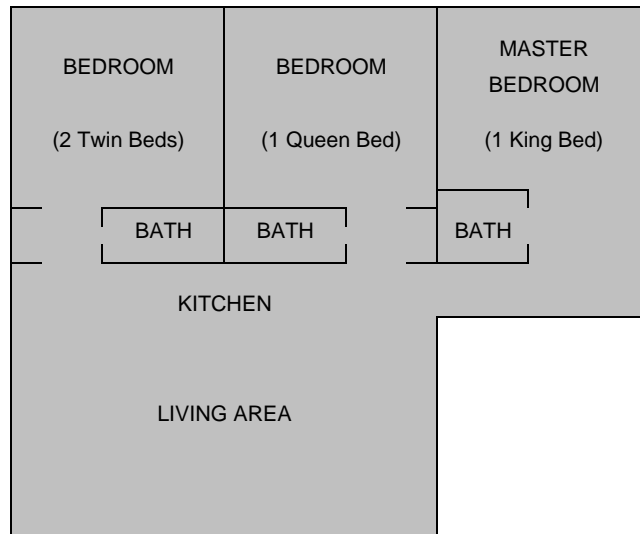
GROUND FLOOR



DOWNSTAIRS

Antero Chalet

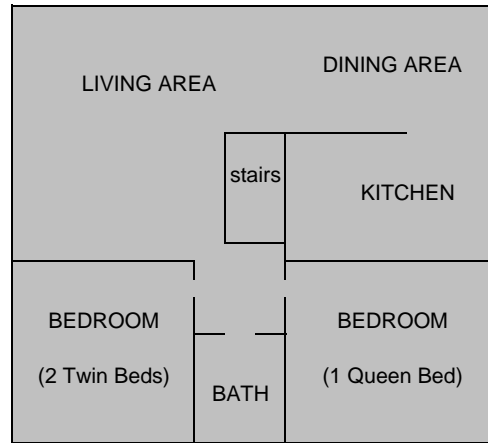
The Antero Chalet can sleep up to **6** people, or can accommodate 3 couples.



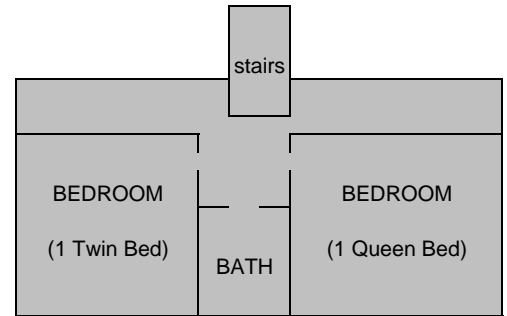
GROUND FLOOR

Fortin Chalet

The Fortin Chalet can sleep up to **7** people, or can accommodate 3 couples by combining twin beds to form a king.



GROUND FLOOR



UPSTAIRS