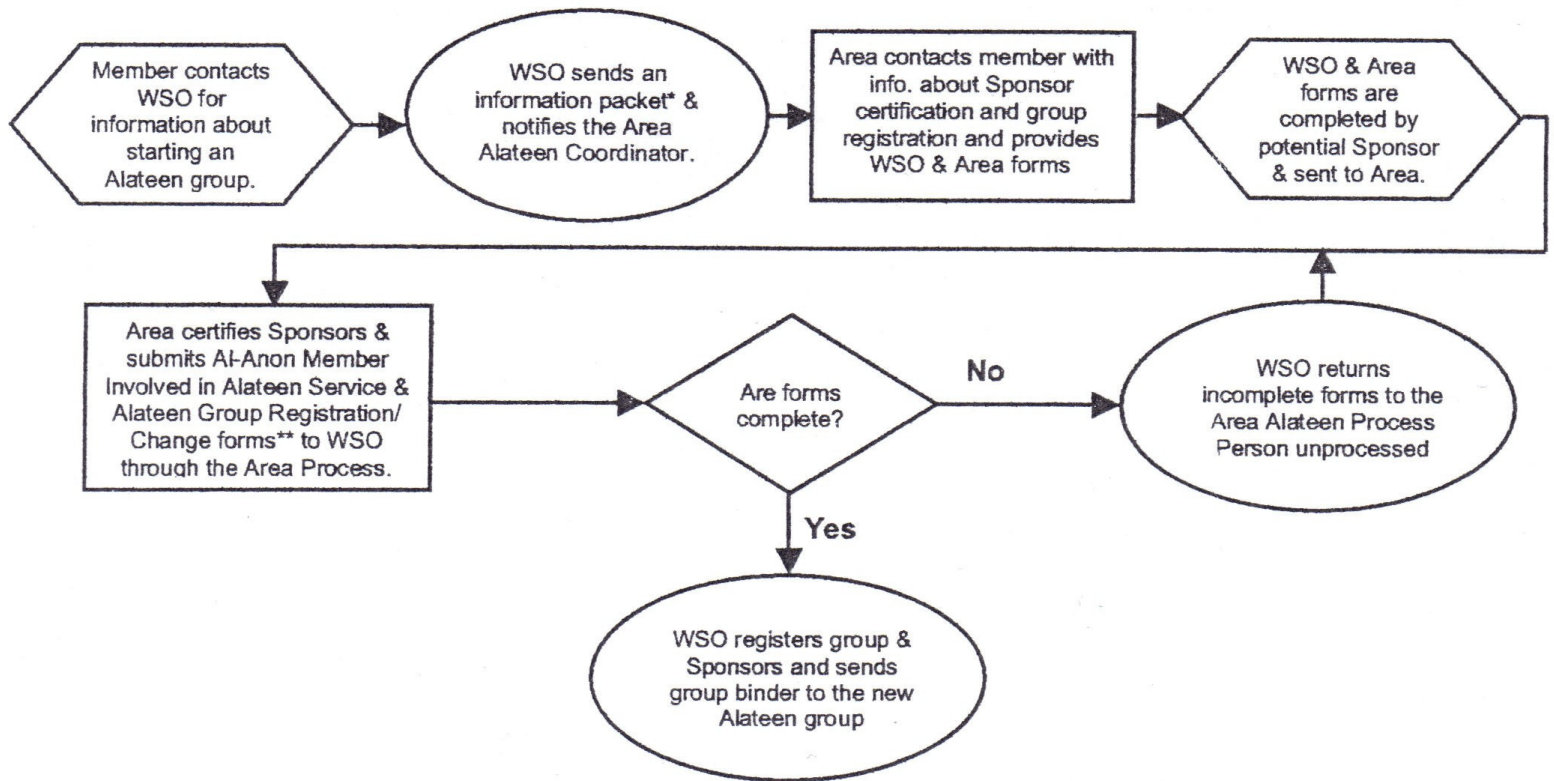


# HOW TO START AN ALATEEN GROUP



## IMPORTANT THINGS TO KNOW WHEN STARTING AN ALATEEN MEETING:

- Alateen meetings register BEFORE the group begins to meet.
- Alateen meetings are CLOSED meetings; only Alateens and area certified AI-Anon Members Involved in Alateen Service attend.
- Only currently registered Alateen groups are listed in local directories and Web sites.
- Submitting incomplete forms creates delays in processing.
- All changes to Group information are sent to WSO through your area's process.

### \* Alateen Information Packet Contents

- *Youth and the Alcoholic Parent* (P-21)
- *Facts about Alateen* (P-41)
- *Information for Educators* (S-64)
- *A Guide for Sponsors of Alateen Groups* (P-29)
- *Alateen Sponsorship Is It for You?* (S-27)
- *Who Are the Members of AI-Anon and Alateen?* (S-29)
- Conference Approved Literature (CAL) Order Form (S-16)

### \*\* WSO Alateen Forms

AI-Anon Member Involved in Alateen Service

Must be signed by the applicant & the Area Authorized Signature

Alateen Group Registration/Group Records Change Form

All sections must be completed except for the Area Use section for *Group Rep. information*